

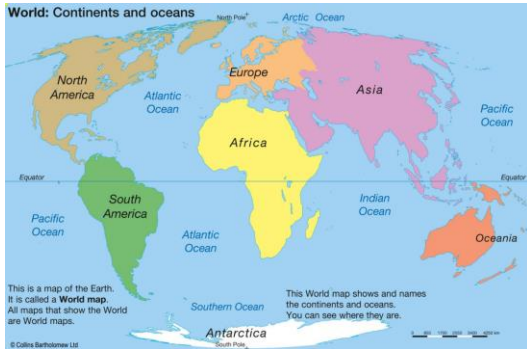
Birch Class

What are we learning in Geography?



2024
Autumn term 2024

Why don't penguins need to fly?



- Antarctica is in fact land with mountains and valleys covered by ice up to 5 km thick in places.
- 70 per cent of the world's fresh water is stored in the ice of Antarctica.
- It is the driest place on Earth and the world's largest desert.
- It is also the coldest and windiest place on Earth.
- It is surrounded by the Southern Ocean.
- The South Pole lies at its centre.

How are penguins able to survive in Antarctica?

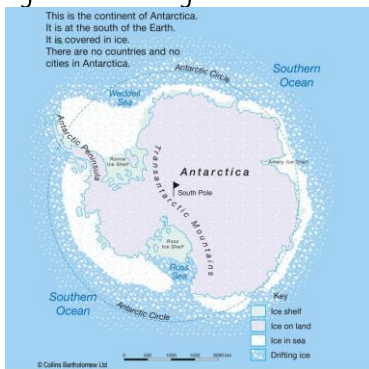
Penguins are birds and belong to the animal kingdom. Take time here to explore with the pupils what they already know about birds – what are the characteristics of all birds? Birds have feathers, beaks, lay eggs, are warm blooded and most can fly! Penguins are one of the small numbers of birds that don't fly. They have 'adapted' to the **habitat** (surroundings). Adaptions include: thick fat keeps out the cold; webbed feet helps them balance; thick oily feathers keeps water off; small flippers for swimming fast; pouch for keeping egg warm.



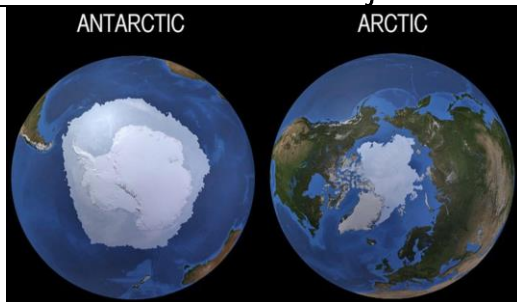
How does the environment of the Sahara Desert compare with Antarctica?

Similarities: huge, windswept, barren, apparently lifeless, extreme and hostile etc.

Differences: The presence of endless sand rather than endless ice and extremely hot and dry conditions rather than extremely cold and dry conditions.



How does the environment of the Arctic compare with Antarctica?



Under the snow and ice in Antarctica and the South Pole is land, not ocean (which is why Antarctica is a continent) whereas under the ice at the Arctic region and North Pole is an ocean of water – the Arctic Ocean.

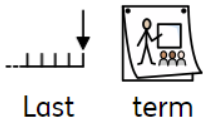
The South Pole webcam:

www.youtube.com/watch?v=cfChwrrEV20

North Pole webcam: www.youtube.com/watch?v=8ul6LqZJl-E

Why don't penguins need to fly?

Penguins don't need to fly in the air anyway because there are no land predators such as polar bears for them to escape from. Wings that would be good for flying would not function underwater and similarly flippers used for swimming would not get penguins airborne. As good swimmers, penguins are able to catch fish to eat and have a better chance of escaping from their underwater predators, such as leopard seals and killer whales.



How does the geography of Kampong Ayer compare to where I live?

Last term

Countries and capital cities of the UK



Location of Kampong Ayer, Brunei, Malaysia



	Boyton/ Launceston / UK	Kampong Ayer
Homes/ houses	<p>Houses are generally built of brick / stone</p> <p>Houses/ cottages / flats / bungalows / terraces</p> <p>Rooms are often carpeted</p> <p>People travel by car, bus, bicycle, taxi, van</p>	 <p>Houses are on stilts</p> <p>People travel to them by boat from the mainland</p> <p>Houses are single storey - bungalows</p> <p>Rooms are boarded with wooden planks and rugs or rattan mats</p>
Weather	<p>Our weather is seasonal and often varies throughout the year. Weather is different in different parts of the UK.</p> <p>In the north of England and Scotland winters are colder. It is more likely to snow there too.</p> <p>In the south of England and near the coast, winters are milder. There is less chance of snow there.</p> <p>In summer, lots of people go on holiday in the south of England to places like Devon and Cornwall. The weather is usually warmer.</p>	 <p>Umbrellas are used to protect people from the rain and also from the sun! The weather in Kampong Ayer is hot and wet all year round. The average daily temperature is 26 °C (79 °F) with an average of 10 mm of rain a day.</p>
Travel	<p>https://www.bbc.co.uk/teach/class-clips-video/articles/zxjsydm</p> <p>In the UK, people use all kinds of transport: cars, bicycles, motorbikes, vans, lorries, trains, aeroplanes, electric vehicles, buses, coaches, trains</p>	 <p>People travel from the island of Kampong Ayer to the mainland for school, shopping, employment. They use water taxis, boats, bikes or walking as modes of transport.</p>



How does my local area compare to other areas of England?

Last year

Where is Cornwall in the world?

<p>Name the continents and the oceans of the world</p>	<p>Name the countries and the capital cities of the UK</p>	<p>Locate Cornwall on a map of the UK. Find the location of Launceston.</p>

Describe human and physical features of a landscape <https://www.bbc.co.uk/bitesize/articles/zr8q7nb>

<p>Physical features Physical features like seas, mountains and rivers are natural. They would be here even if there were no people around.</p>	<p>Human features Human features are things like houses, roads and bridges. They have been built by people.</p>

How does Boyton compare to other places in England?

	Boyton	Bude	London
Physical features	fields, woodland, river, weather, valley, hill	cliff, beach, cove, valley, hill, headland, coastline, river	river, vegetation,
Human features	houses, farms, hamlet, village, church, chapel,	canal, town, harbour, office, shops, roads,	city, park, factory, port, docks, skyscrapers, houses, flats, terraces, shops, industry, railway, underground