

**Boyton Primary School**



# Boyton Primary School Newsletter

**Friday 29th November 2024**



Email: [boyton@andaras.org](mailto:boyton@andaras.org)

| Tel: 01566 772484

Dear Parents,

We have another busy, busy week! Firstly, it was really good to meet with you this week for a parent meeting to celebrate your children's progress. If you weren't able to attend, please do chat with Miss Kinver, Mrs Gilman or myself to arrange an alternative date.

A huge congratulations to Sybil, Logan and Lauren who competed against children from many other schools on Thursday in the Duchy College Cross Country competition. All completed a mile across the Duchy land – really impressive stuff!

We also had a visit from Mrs Furber on Thursday - the Head teacher of St Stephens School in Launceston. She came to undertake a deepdive in History for us. She was incredibly complimentary about the school in terms of learning environments, children's books and who confidently, knowledgeably and enthusiastically the children spoke about History. Well done all!

Thank you also for the Christmas tree decorations that are beginning to come into school for our Christmas tree! We look forward to having our tree next week!

**Dates for your diaries:**

This evening we have the Launceston Lights Switch on! The children are very enthusiastic to sing on the stage. We are performing at 4.40pm with our friends from Werrington and North Petherwin.

We also have decorated a Christmas tree for the St Mary Magdalene's Christmas tree festival – do pop into the church if you're in town.

I have included a diary of events coming up over the next few weeks – it's getting busier!

As always, if you should have any concerns or queries, please don't hesitate to get in touch.  
Have a lovely weekend.

Best wishes

Mrs Davies [kdavies@andaras.org](mailto:kdavies@andaras.org)

## Dates for Your Diary

Stay and Play every Wednesday - 1.30pm – 2.30pm  
Launceston Lights Switch on – Friday 29<sup>th</sup> November  
Wednesday 4<sup>th</sup> December / Wednesday 11<sup>th</sup> December – Acorns and Birch visit to the Woodland Skill Centre  
Parent meetings – Tuesday 26<sup>th</sup> November, (more information to follow)  
Year 1 Hearing Screening at school – Tuesday 26<sup>th</sup> November  
PTA Bingo! Friday 6<sup>th</sup> Dec – Boyton Parish hall  
Christmas Carol Concert – Tuesday 10<sup>th</sup> December  
Family Christmas lunch – Wednesday 18<sup>th</sup> December (More details to follow!)  
School breaks up for Christmas! – Friday 20<sup>th</sup> December

## Forthcoming events

**Stay and Play** – Wednesday 27<sup>th</sup> November 1.30pm (all are welcome with any children below school age!)

**Launceston Lights Switch on Friday 29<sup>th</sup> November** – We will be singing on the stage in Town Square from 4.40pm with children from Werrington and North Petherwin

## Brilliance at Boyton: This week's Stars



**Acorn / Birch-** George, Emilia and Libby



**Chestnuts** – Halle, Edith and Ella

Whole School to Date	96.41%
Acorns This Week	96.03%
Birch This Week	90.28%
Chestnut This Week	92.05%

## Useful Information

### Safeguarding

- All children have a right to be safe, no matter who they are or what their circumstances.
- Keeping children safe is everyone's responsibility.
- If you are concerned about a child, please speak to one of the Designated safeguarding Leads. If a child is in immediate danger contact the police on 999.



**Katherine Davies**  
Safeguarding Lead



**Jane Gilman**  
Deputy Safeguarding Lead

### Useful numbers

Early Help Hub	01872 322277
Citizens Advice	0344 411 1444
NSPCC	0808 800 5000
Childline	0800 1111
Addiction: Drug and Alcohol support	01579 340616 (24hrs)
Multi-Agency Referral Unit (MARU)	0300 123 1116 (If you are concerned about a child's safety)

## School Clubs

### Breakfast Club:

At Boyton, we are really lucky to have a fantastic Breakfast Club run by Tracy. Children can be dropped off from 8.15am and have a choice of breakfasts including cereals, toast, etc. It costs £2 a session. If you would like to book your child in, please let Mrs Basford in the school office know.

[secretary@boyton.cornwall.sch.uk](mailto:secretary@boyton.cornwall.sch.uk)

### After School Clubs    Autumn Term 2024:

#### Monday

Mountain Biking Club - Caja

#### Tuesday

Film club - Miss Kinver

#### Thursday

Board game club – Mrs Davies

# Acorn/Birch Class Update

What another great week of learning we have had in Acorns and Birch class! Acorns have been reading the book 'Penguin' and have learnt all about where penguins live! I have been really impressed with how much they can remember about Antarctica! Birch have also been learning more about Antarctica, comparing it with the Arctic. Ask us what animals live there and what is the biggest difference between the two places!

You may have seen some strange footprints left in our classroom this week! Luckily, Mrs. Basford witnessed a strange visitor to our school and was able to give us a description of the culprit when we interviewed her! We are now on the lookout for him!

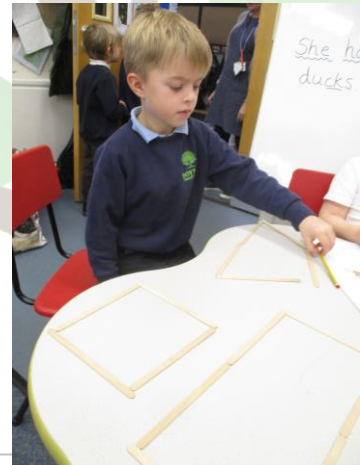
Acorns have been learning about the number 5 in maths, finding different ways of making 5 and then doubling 5 to make 10! Birch have been counting the number of sides and vertices on 2D shapes and started to draw our own 2D shapes. We're finding this quite challenging, so any practice at home would be amazing – thank you!

We have been using our throwing and catching skills in PE to play simple games and enjoyed our gymnastics session with Caja again!

We're looking forward to our visit to the Outdoor Learning Centre next Wednesday!

Have a lovely weekend!

Mrs. Gilman





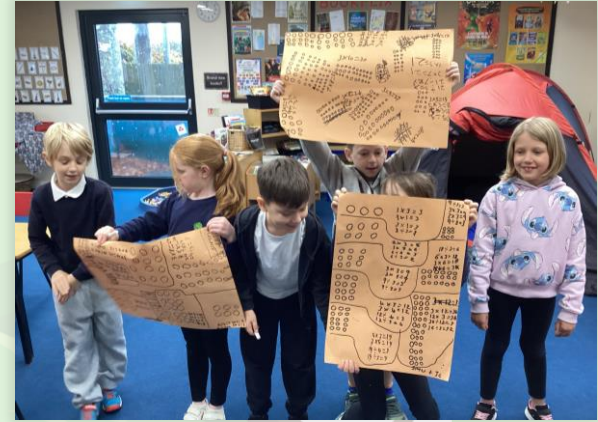
# Chestnut Class Update

In English this week, we have started a new book, which is called the 'The Selfish Giant'. On Wednesday, we built a wall in the classroom and divided the children to have all the resources and others to have none. The children then used emotions to write a letter on how they felt. During their learning focus this week, we have looked at a range of words, where we have added suffixes and discussed how powerful they are.

In Maths this week, the Yr 3/4 children have learnt their 7, 9 11- and 12-times tables, where they have used a range of practical activities to help recall them. Whereas the Yr 5/6 children have subtracted fractions with different denominators, converted fractions between mixed and improper and have broken the whole.

In Computing this week, the children have recorded videos – promoting Boyton Primary School. The children had to think about making a script, how they were going to film it (with different angles) and how they were going to use the audio.

During their PSHE learning, they have learnt about community and how to be respectful to each other.



What children need to know about

# ONLINE BULLYING



## What is online bullying?

ONLINE BULLYING – ALSO KNOWN AS CYBERBULLYING – IS BULLYING THAT TAKES PLACE ON THE INTERNET OR VIA ELECTRONIC DEVICES AND MOBILE PHONES. IT CAN INCLUDE:

1. SENDING SOMEONE MEAN OR THREATENING EMAILS, DIRECT MESSAGES OR TEXT MESSAGES
2. HACKING INTO SOMEONE'S ONLINE ACCOUNT
3. BEING RUDE OR MEAN TO SOMEONE WHEN PLAYING ONLINE GAMES



## Why does it happen?

GOING ONLINE MAKES IT EASIER FOR PEOPLE TO SAY AND DO THINGS THEY PROBABLY WOULDN'T DO FACE TO FACE. ONLINE BULLIES DON'T GET TO SEE THEIR VICTIMS' REACTIONS IN REAL LIFE, SO THIS CAN COOON THEM FROM THE REAL DAMAGE THAT THEY ARE DOING. QUITE OFTEN, PEOPLE BULLY BECAUSE THEY ARE GOING THROUGH SOMETHING DIFFICULT THEMSELVES AND TAKING IT OUT ON OTHERS IS THE ONLY WAY THEY KNOW HOW TO GET CONTROL OF THEIR OWN EMOTIONS.

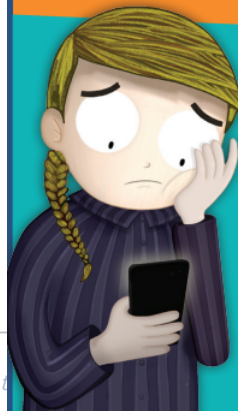
## How does it feel to be bullied?

BEING BULLIED CAN IMPACT ON YOUR SELF-ESTEEM, CONFIDENCE AND SOCIAL SKILLS. BECAUSE IT HAPPENS ON YOUR PHONE, TABLET OR COMPUTER, IT CAN FEEL LIKE YOU ARE UNDER THREAT EVEN WHEN YOU'RE IN A SAFE ENVIRONMENT, SUCH AS YOUR BEDROOM. DON'T FORGET...IT IS NOT YOUR FAULT IF YOU'RE BEING BULLIED.



## Am I an online bully?

SOMETIMES IT ISN'T OBVIOUS THAT WHAT YOU ARE DOING IS WRONG, BUT IF YOU USE DIGITAL TECHNOLOGY TO UPSET, ANGER OR EMBARRASS SOMEONE ON PURPOSE, THIS MEANS YOU'RE INVOLVED IN ONLINE BULLYING. IT MIGHT BE AS SIMPLE AS 'LIKING' A MEAN POST, LAUGHING AT AN ONLINE VIDEO, OR SPREADING A RUMOUR, BUT THE PERSON BEING BULLIED COULD FEEL LIKE THEY ARE BEING GANGED UP ON. THINK ABOUT HOW IT WOULD MAKE YOU FEEL IF IT HAPPENED TO YOU. EVERYONE CAN MAKE MISTAKES, BUT IT'S IMPORTANT TO LEARN FROM THEM – GO BACK AND DELETE ANY UPSETTING OR NASTY POSTS,






‘So proud of Logan, Sybil  
and Lauren for their  
impressive  
efforts at the Duchy College  
Cross Country event!’







## Dates for the End of Term - December 2024

Monday 2 <sup>nd</sup> December	Tuesday 3 <sup>rd</sup> December	Wednesday 4 <sup>th</sup> December	Thursday 5 <sup>th</sup> December	Friday 6 <sup>th</sup> December
Children's home-made decorations to be brought into school please.		Acorn/Birch children visiting the <b>Woodland Skill Centre</b> (Bring packed lunches, very warm clothes and wellies)		PTA School Bingo – Village Hall. Doors open at 6.30pm for 7pm start!
Monday 9 <sup>th</sup> December	Tuesday 10 <sup>th</sup> December	Wednesday 11 <sup>th</sup> December	Thursday 12 <sup>th</sup> December	Friday 13 <sup>th</sup> December
	Dress rehearsal at the church. Please drop the drop at the church for 9am. (Sadly, no breakfast club today)  <b>Christmas Carol Concert</b> – Boyton Church. Please arrive from 6.15pm for a 6.30pm start	Acorn/Birch children visiting the <b>Woodland Skill Centre</b> (Bring packed lunches, very warm clothes and wellies)	PTA Whole School trip to the Pantomime! Hoping to be back by 5.30pm. Please make a £5 donation on <u>Arbor</u> .  (Please can children wear school uniform for easy identification)	Boyton Christmas Jumper / top Day!
Monday 16 <sup>th</sup> December	Tuesday 17 <sup>th</sup> December	Wednesday 18 <sup>th</sup> December	Thursday 19 <sup>th</sup> December	Friday 20 <sup>th</sup> December
	<b>Santa Run</b> (around the school field!) <u>in</u> aid of Cancer Research. A token donation would be appreciated. Children to wear anything Christmassy!!	Christmas Lunch for family and friends! (Christmas jumpers!) More information to follow re staggered arrivals due to the popularity of this!	<b>Christmas Disco</b> for children of Boyton, Werrington and North <u>Petherwin</u> . Mr P is the DJ! Location: Werrington Primary School 5.30- 7pm	Last Day of term – please can children bring in games to play. (Nothing electronic)  



## Christmas Decoration competition!

Make a decoration at home and bring it into school on Monday 2<sup>nd</sup> December for our tree!





**BOYTON**  
PRIMARY SCHOOL

## School Update.

We are very excited to let you know, that we are one step closer to opening our School Nursery after the February half term, we will keep you all updated.



## WOULD YOU SUPPORT A COMMUNITY SHOP IN BOYTON?

Several people in the village have been asked if they would support a Community Shop?

it appears the answer is yes.

An update will be  
announced  
in the New Year



## Christmas collections

for, recycling, rubbish, food and garden waste

If your collection is due on:	We'll collect on:
Monday 23 December	Normal Collection
Tuesday 24 December	Normal Collection
Wednesday 25 December	Friday 27 December
Thursday 26 December	Saturday 28 December
Friday 27 December	Monday 30 December
Monday 30 December	Tuesday 31 December
Tuesday 31 December	Wednesday 1 January
Wednesday 1 January	Thursday 2 January
Thursday 2 January	Friday 3 January
Friday 3 January	Saturday 4 January

All other collections will take place as normal. To download a collection calendar visit [www.cornwall.gov.uk/myarea](http://www.cornwall.gov.uk/myarea) or call 0300 1234 141.

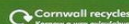
[www.cornwall.gov.uk/recycle](http://www.cornwall.gov.uk/recycle)

Book  
before  
you visit

Launceston

Household  
Waste and  
Recycling  
Centre

Starting  
Friday 29th Nov



**In case of an emergency**  
We are very fortunate to have  
located in the village a **defibrillator**  
Which is based on the  
**Methodist Church wall PL15 9RF**

### BOYTON PARISH COUNCILLORS

Cllr. Martin Stanbury	Chairman
Cllr. Mrs Jenny Smith	Vice Chairperson
Cllr Jon Bennett	Cllr John Sanders
Cllr Mike Wood	Cllr Gerd Willetts
Cllr Mervyn Law	Cllr Stephen Davy

Suzanne Cleave Parish Clerk

Recycling for charity, are collecting  
TAKEAWAY tubs, Old Tupperware  
style food containers, ice cream tubs,  
reusable drinks bottles, inc. plastic  
coffee mugs and baby bottles, sweet  
tubs, all lids. . in ANY condition..  
on THURSDAY Dec. 5th. in  
TESCO car park from 10:15 - 11am.  
Cant make that time you can drop off  
to Maunders or the library.

### Recycling for Charity

#### WANTED! PLASTIC

Reusable bottles including  
Baby Bottles, sippy cups &  
Tupperware and all storage  
and take-away containers.  
Old lids and bases, all sizes  
broken or not



Contest

## Boyton Village Diary



## DECEMBER 2024

- 5<sup>th</sup> Ladies Skittles**  
At The Church Hall 7.30pm
- 5<sup>th</sup> Coffee Morning**  
At The Methodist Church Hall 10am *Everyone welcome*
- 6<sup>th</sup> Boyton Primary School fundraising Bingo**  
At The Church Hall 6.30 pm *Everyone welcome*
- 9<sup>th</sup> Boyton Parish Church Carol Service** 7.00pm  
Followed by refreshments in the Church Hall *Everyone welcome*
- 11<sup>th</sup> Table Tennis Evening (Just for Fun)**  
Boyton Church Hall 7.30pm *Everyone welcome*
- 11<sup>th</sup> Boyton Countrysider's Christmas Lunch**  
Further details available from: [shirleybell789@gmail.com](mailto:shirleybell789@gmail.com)
- 12<sup>th</sup> Coffee Morning**  
At The Church Hall 10am *Everyone welcome*
- 12<sup>th</sup> Mobile Library**  
Opposite the Methodist Church 11.45am -12.10pm
- 16<sup>th</sup> Boyton Parish Council Meeting**  
At The Church Hall 7.30pm *Everyone welcome*
- 19<sup>th</sup> Coffee Morning**  
At The Methodist Church Hall 10am *Everyone welcome*
- 22<sup>nd</sup> Carol Service** Led by Mrs Sheila Burt  
Followed by a sweet & savoury tea  
At The Methodist Church Hall 3.00pm *Everyone welcome*

If you would like to receive the Boyton Village Diary electronically,  
please just drop me an email and I will include you on  
the mailing list [janetroflee@gmail.com](mailto:janetroflee@gmail.com)



## SPEEDING IN BOYTON

Over the last couple of years, Boyton Parish Council has purchased and installed two speed indicator signs in the village. It was hoped that the signs would encourage motorists to keep to the 30mph speed limit, however some of the data collected has been alarming.

While the majority of people travelling through Boyton are sticking to the limit, there are a few that are flouting the law and are putting the safety of residents at risk.

During September, a few vehicles were recorded as travelling over 40mph, but one, just after 10pm on Sep 18 travelled through the village at speed, passing the sign at 74mph.

One vehicle passed the speed sign at 76mph on 7<sup>th</sup> November at 21:50hrs

5<sup>th</sup> October 54mph at 13:10hrs

20<sup>th</sup> October 58mph at 19:01hrs

8<sup>th</sup> November 63mph at 17:38hrs

14<sup>th</sup> November 60mph 09:08hrs

many more over 40mph, average speeding vehicles is 27.18% of those entering the village. Speed monitor does show a lot who enter somewhat over the 30mph do slow down. It is worrying at the high speeds anyone coming out of drives either side might be at risk

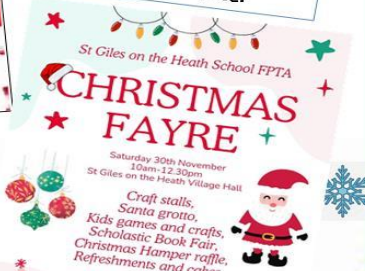
**This information has been passed onto Cornwall Council and the Police.**

Boyton Parish Council urges everyone to be mindful of their speed, and to keep the parish safe for residents and visitors alike.



## LOCAL EVENTS

**CHRISTMAS LIGHTS SWITCH ON**  
Launceston Town Centre  
Friday 29th November  
from 4.00pm  
**Fun for all the family**



Keep up to date by following the Boyton Support Group on Facebook



# Programme



## Town Square Christmas Stage

4.00pm onwards Entertainment from Local Schools

5.30pm Bowden Derra Park Sing & Sign Choir

6.25pm Father Christmas Arrives

6.30pm CHRISTMAS LIGHT SWITCH ON

6.45pm Popchoir

7.30pm Charlie C's Dance

## Around the Town

4pm - 8pm (ish) Christmas Market in the Town Square  
Street Entertainers, Launceston Town Band &  
Access Theatre

Pop up Museum open with Christmas display

6pm Free Family Fun at Central Methodist Church

7pm St Mary's Christmas Tree Festival Opens followed  
by the Choir singing amongst the trees



Late Night Shopping until 8pm



Friday 29<sup>th</sup> November







# School Calendar 2024/2025

Cornwall Council

2024/2025 School Term Dates for Community and Voluntary-Controlled Schools



September 2024						
Mon		2	9	16	23	30
Tue		3	10	17	24	
Wed		4	11	18	25	
Thurs		5	12	19	26	
Fri		6	13	20	27	
Sat		7	14	21	28	
Sun		8	15	22	29	

October 2024						
Mon		7	14	21	28	
Tue	1	8	15	22	29	
Wed	2	9	16	23	30	
Thurs	3	10	17	24	31	
Fri	4	11	18	25		
Sat	5	12	19	26		
Sun	6	13	20	27		

November 2024						
Mon			4	11	18	25
Tue			5	12	19	26
Wed			6	13	20	27
Thurs			7	14	21	28
Fri		1	8	15	22	29
Sat		2	9	16	23	30
Sun		3	10	17	24	

## School holidays

## Bank holidays

Christmas Day	25 December 2024
Boxing Day	26 December 2024
New Years Day	01 January 2025
Good Friday	18 April 2025
Easter Monday	21 April 2025
May Bank Holiday	05 May 2025
Spring Bank Holiday	26 May 2025
Summer Bank Holiday	25 August 2025

December 2024						
Mon		2	9	16	23	30
Tue		3	10	17	24	31
Wed		4	11	18	25	
Thurs		5	12	19	26	
Fri		6	13	20	27	
Sat		7	14	21	28	
Sun		8	15	22	29	

January 2025						
Mon		6	13	20	27	
Tue		7	14	21	28	
Wed	1	8	15	22	29	
Thurs	2	9	16	23	30	
Fri	3	10	17	24	31	
Sat	4	11	18	25		
Sun	5	12	19	26		

February 2025						
Mon		3	10	17	24	
Tue		4	11	18	25	
Wed		5	12	19	26	
Thurs		6	13	20	27	
Fri		7	14	21	28	
Sat		8	15	22	29	
Sun		9	16	23		

## AUTUMN TERM (74 days)

3 September - 20 December 2024  
(HALF TERM 28 October - 1 November 2024)

## SPRING TERM (60 days)

6 January - 4 April 2025  
(HALF TERM 17-21 February 2025)

## SUMMER TERM (61 days)

22 April - 23 July 2025  
(HALF TERM 26-30 May 2025)

195 days are included on the school calendar. Schools will be open to pupils for 190 days. The five additional days are allotted for In-Service Training (INSET). Schools allocate their own INSET days.

March 2025						
Mon		3	10	17	24	31
Tue		4	11	18	25	
Wed		5	12	19	26	
Thurs		6	13	20	27	
Fri		7	14	21	28	
Sat		8	15	22	29	
Sun		9	16	23	30	

April 2025						
Mon		7	14	21	28	
Tue	1	8	15	22	29	
Wed	2	9	16	23	30	
Thurs	3	10	17	24		
Fri	4	11	18	25		
Sat	5	12	19	26		
Sun	6	13	20	27		

May 2025						
Mon		5	12	19	26	
Tue		6	13	20	27	
Wed		7	14	21	28	
Thurs	1	8	15	22	29	
Fri	2	9	16	23	30	
Sat	3	10	17	24	31	
Sun	4	11	18	25		

June 2025						
Mon		2	9	16	23	30
Tue		3	10	17	24	
Wed		4	11	18	25	
Thurs		5	12	19	26	
Fri		6	13	20	27	
Sat		7	14	21	28	
Sun		8	15	22	29	

July 2025						
Mon		7	14	21	28	
Tue	1	8	15	22	29	
Wed	2	9	16	23	30	
Thurs	3	10	17	24	31	
Fri	4	11	18	25		
Sat	5	12	19	26		
Sun	6	13	20	27		

August 2025						
Mon		4	11	18	25	
Tue		5	12	19	26	
Wed		6	13	20	27	
Thurs		7	14	21	28	
Fri	1	8	15	22	29	
Sat	2	9	16	23	30	
Sun	3	10	17	24		